

# MONTHLY MEMBERSHIP PROGRESS REPORT

District 12 L

Results as of: 4/30/2024

GMT:

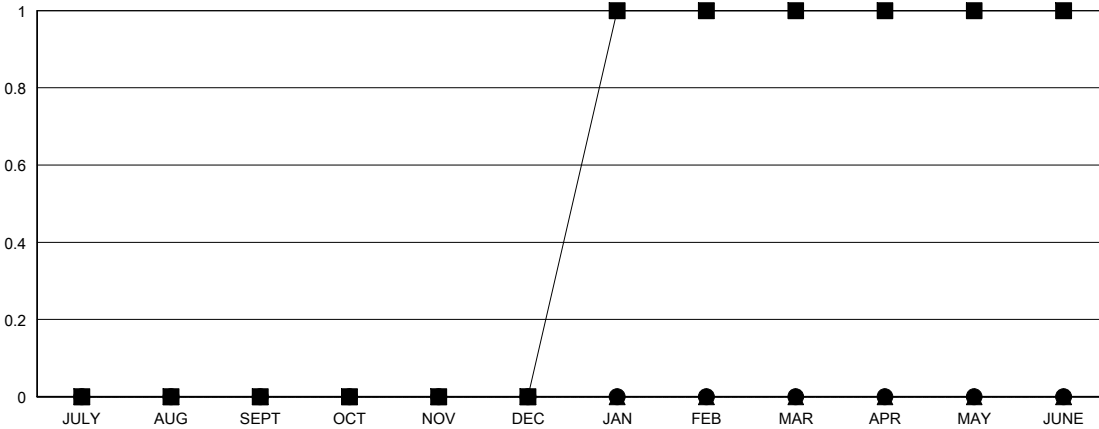
LOCATION TENNESSEE

GMT CA

Clubs			
RESULTS FOR 2023-2024			
QUARTER	NEW CLUB GOAL	NEW CLUBS	DROPPED CLUBS
JULY/AUG/SEPT	0	0	1
OCT/NOV/DEC	0	0	1
JAN/FEB/MAR	1	0	0
APR/MAY/JUNE	0	0	0

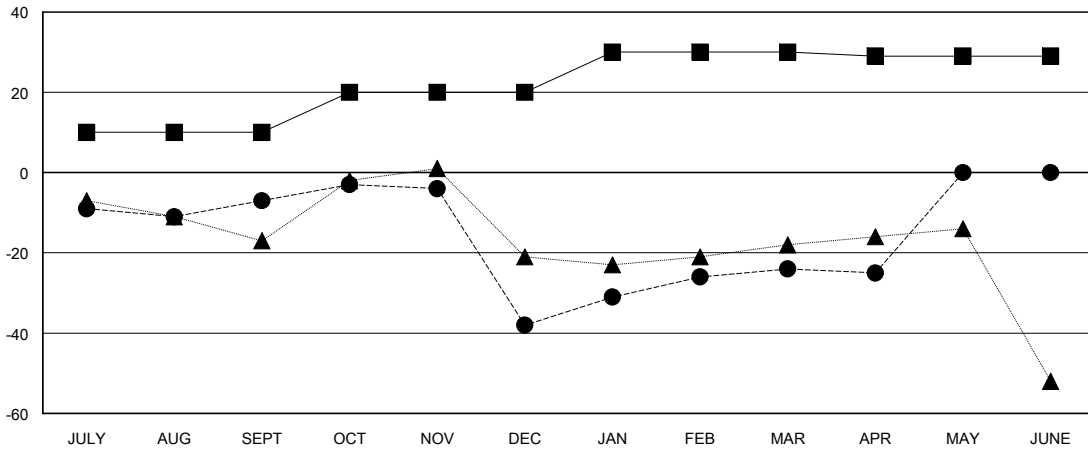
Members			
RESULTS FOR 2023-2024			
QUARTER	MEMBER GROWTH NET GOAL	MEMBER GROWTH ACTUAL	DROPPED MEMBERS ACTUAL (including transfers)
JULY/AUG/SEPT	10	18	23
OCT/NOV/DEC	10	18	45
JAN/FEB/MAR	10	21	6
APR/MAY/JUNE	-1	5	5

GOALS AND ACTUAL NEW CLUBS CUMULATIVE



- - CURRENT YEAR GOALS FOR NEW CLUBS
- - CURRENT YEAR ACTUAL NEW CLUBS
- ▲ - LAST YEAR ACTUAL NEW CLUBS

GOALS AND ACTUAL MEMBERS CUMULATIVE



- - MEMBER GROWTH NET GOAL
- - MEMBER GROWTH ACTUAL
- ▲ - LAST YEAR MEMBERSHIP ACTUAL

DROPPED CLUBS: 2	21 CLUBS OF 32 ADDED 1 OR MORE NEW MEMBERS	<b>GENDER DISTRIBUTION</b> MALE 405 (66.07%) FEMALE 207 (33.77%)
<b>DROPPED MEMBERS</b> DECEASED 8 CLUB CANCELLED 6 OTHER 65 <b>TOTAL 79</b>	<a href="#">CLICK HERE FOR CUMULATIVE MEMBERSHIP DATA</a>	TOTAL FAMILY UNIT MEMBERS 69 FAMILY MEMBERS PAYING HALF DUES 35